



# Healthy London Partnership Children & Young People's Programme Launch Event



# London Health Commission



Healthy London Partnership –  
The delivery arm of the London Health Commission

## Goal – London to be world’s healthiest global city

### 10 programme aims from London Health Commission



Give all London’s children a healthy, happy start to life



Enable Londoners to do more to look after themselves



Get London fitter with better food, more exercise and healthier living



Ensure that every Londoner is able to see a GP when they need to and at a time that suits them



Make work a healthy place to be in London



Create the best health and care services of any world city, throughout London and on every day



Help Londoners to kick unhealthy habits



Fully engage and involve Londoners in the future health of their city



Care for the most mentally ill in London so they live longer, healthier lives

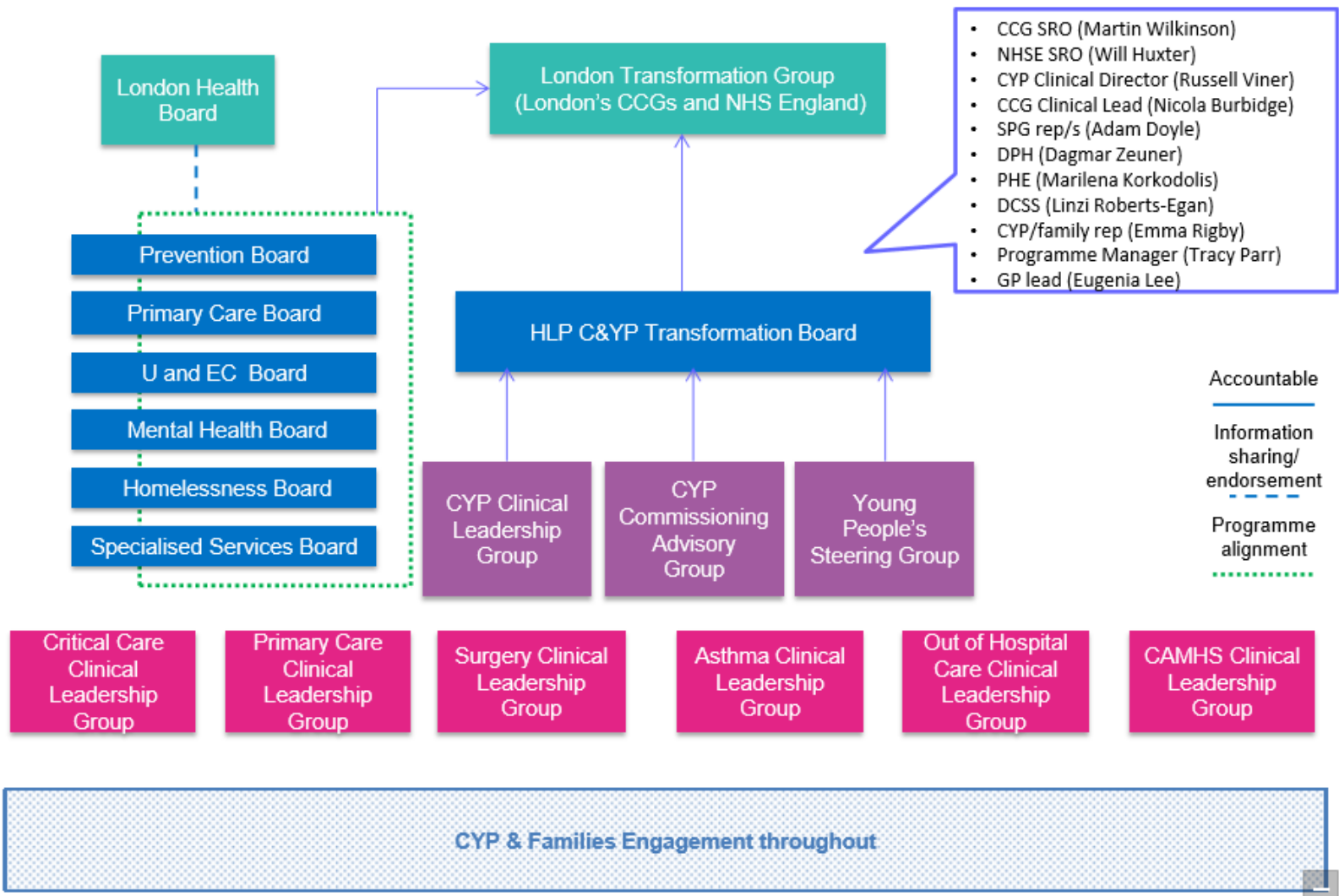


Put London at the centre of the global revolution in digital health

# CYP Programme on a Page

Current State	Drivers	Responsibilities for delivery	Future Transformed State
<p><b>Case for change (document)</b>            Poor outcomes</p> <ul style="list-style-type: none"> <li>• High mortality</li> <li>• Morbidity (unplanned admissions for LTCs)</li> <li>• Serious incident analysis</li> <li>• Analysis of CDOP data</li> <li>• Comparison with other England urban areas</li> <li>• Comparison with European outcomes</li> </ul> <p>Unwarranted variation            Fragmented provider landscape            Fragmented commissioning landscape            Views of CYP and their families on what does not currently work for them</p>	<p><b>Policy Advice</b></p> <ul style="list-style-type: none"> <li>• NICE guidance</li> <li>• Royal Colleges</li> <li>• DH/NHS England national reports</li> <li>• Voluntary sector</li> </ul> <p><b>London Health Commission</b></p> <ul style="list-style-type: none"> <li>• Better health for all</li> <li>• Better health for London's children</li> <li>• Better care</li> <li>• Maximising science and innovation</li> <li>• Making it happen</li> </ul> <p><b>Five Year Forward View</b></p> <ul style="list-style-type: none"> <li>• Health and well-being gap</li> <li>• prevention</li> <li>• Care and quality gap</li> <li>• new models of care</li> <li>• Funding/Value and efficiency gap</li> </ul> <p><b>Seven Day Services</b>  <b>Views of CYP and their families on what services should look like</b></p>	<p><b>HLP:</b>            Describes key elements of future system            Produces standards for use pan-London as determined by programme board            Develops future funding and commissioning models            Supports assessment of system ability to deliver standards and provides support for delivery            Brings disparate elements of system together to collaborate            Ensures connections with other programmes            Collates views of CYP and their families on what services should look like</p> <p><b>SPGs:</b>            Develop 5 year CYP strategy CYP at SPG level            Design mechanism for delivery to translate into local plans            Support collaboration and commissioning for population at SPG level through population based networks            Local views of CYP and their families on what services should look like            Collaborate to feed into HLP board</p>	<p><b>Better outcomes for CYP</b></p> <ul style="list-style-type: none"> <li>• Reduced mortality</li> <li>• Reduced morbidity</li> <li>• Improvement in specific indicators</li> <li>• Improved feedback from CYP</li> <li>• PROMS?</li> </ul> <p><b>Integrated provider Landscape</b></p> <ul style="list-style-type: none"> <li>• Services well described and readily available eg DoS</li> <li>• Providers working together as a system</li> <li>• Effective visible linkages across system e.g. primary to secondary care</li> </ul> <p><b>Standards of care improved</b></p> <ul style="list-style-type: none"> <li>• Standards delivered consistently within providers improved outcomes, fewer SIs</li> </ul> <p><b>More care delivered closer to home</b></p> <ul style="list-style-type: none"> <li>• Reduced in-patient episodes</li> </ul>
<p><b>Current gaps in knowledge</b></p> <ul style="list-style-type: none"> <li>• Accurate mapping of provider landscape</li> <li>• Ability of services to deliver standards</li> <li>• Audit data</li> </ul>		<p><b>CCGs:</b>            Develop effective local partnerships with local authorities and public health to support delivery            Commission to agreed standards            Use best practice models worked through by HLP to adapt for local implementation            Support commissioners to participate in development programme            Local views of CYP and their families on what services should look like</p>	<p><b>More effective commissioning</b></p> <ul style="list-style-type: none"> <li>• Co-commissioning models in place across the system to deliver effective pathways of care</li> <li>• Functional network of commissioners who have completed development programme</li> </ul> <p><b>CYP and families at heart of service design</b></p> <ul style="list-style-type: none"> <li>• CYP and families' views are incorporated in commissioning and delivery of services across the system</li> </ul>

# Healthy London Partnership Children and Young People Programme Governance



## Children and Young People – Detailed Deliverables 2015 - 2016

Priority A Develop Population Based Networks	Priority B Reduce variation in care	Priority B Reduce variation in care	Priority D Improve commissioning	Priority E Innovative Access
<ul style="list-style-type: none"> <li>Develop guidance for model of population based CYP networks including funding</li> <li>Understand data requirements to describe needs analysis in population based networks</li> <li>Develop data set and data dictionary to enable effective needs analysis CYP</li> <li>Work with SPGs to support development and implementation of population based network in each SPG dependent on local requirements</li> <li>Develop effective linkages between population based networks and HLP CYP programme</li> <li>Undertake evaluation of population based networks and disseminate learning (move to 2016 – 2017)</li> </ul>	<p>Undertake baseline mapping of provider landscape In depth analysis of CYP mortality based n data from CDOPs Develop standards of care</p> <ul style="list-style-type: none"> <li>Acute care (completed)</li> <li>Asthma (completed)</li> <li>Surgical networks (completed)</li> <li>HDU</li> <li>Out of hospital models of care</li> <li>Transition to adult services</li> <li>CAMHS (initial output completed)</li> <li>Diabetes</li> </ul> <p>Undertake baseline mapping of trusts against standards based on operational policies Devise and implement peer review process for acute trusts Acute care – model annual report structure, model operational policies Asthma – delivery plan at pan-London system, SPG level and CCG level Community pharmacy engagement plan Surgical networks – support pilot in SW London linked into 11 DoS HDU – develop funding and co-commissioning models CAMHS – support CCGs in compiling transformation plans</p> <ul style="list-style-type: none"> <li>Support CCGs in CAMHS transformation plan implementation</li> </ul> <p>Out of hospital care</p> <ul style="list-style-type: none"> <li>Produce directory of models</li> <li>Undertake financial modelling (2016 – 17)</li> </ul> <p>Develop workforce strategy for all areas in conjunction with workforce programme</p>	<p>Develop model of primary care to meet needs CYP working with primary care programme Work with GP federation to support incorporation of models into delivery</p> <div data-bbox="863 846 1148 971" style="background-color: #4a4a9a; color: white; text-align: center; padding: 5px;"> <p>Priority C Integration of care</p> </div> <p>Develop integrated models of care for CYP (move to 2016 – 2017 based on other workstream outputs)</p> <ul style="list-style-type: none"> <li>Undertake scoping of models in relation to CYP care (link in with Vanguard bids and work within HEE) (2016 – 2017)</li> </ul>	<ul style="list-style-type: none"> <li>Develop CYP commissioning programme (completed)</li> <li>Submit funding bid to HEE for first cohort</li> <li>Procure educational provider</li> <li>Recruit first cohort</li> <li>Support development of new commissioning models for CYP services (2016 – 2017)</li> <li>Support CCGs to develop commissioning strategies to implement CAMHS task force</li> </ul>	<ul style="list-style-type: none"> <li>Guidance on effective communication with CYP using new media on how to access services effectively</li> <li>Development of materials to illustrate when medical advice should be sought</li> </ul>