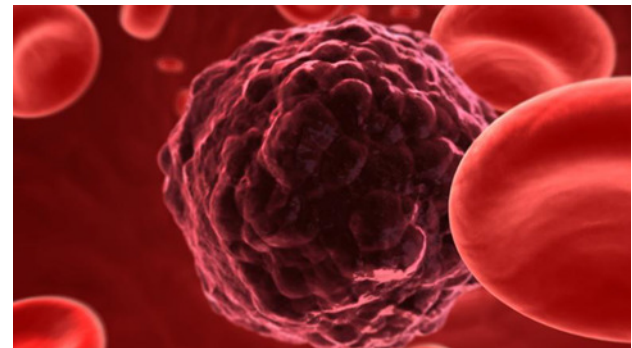


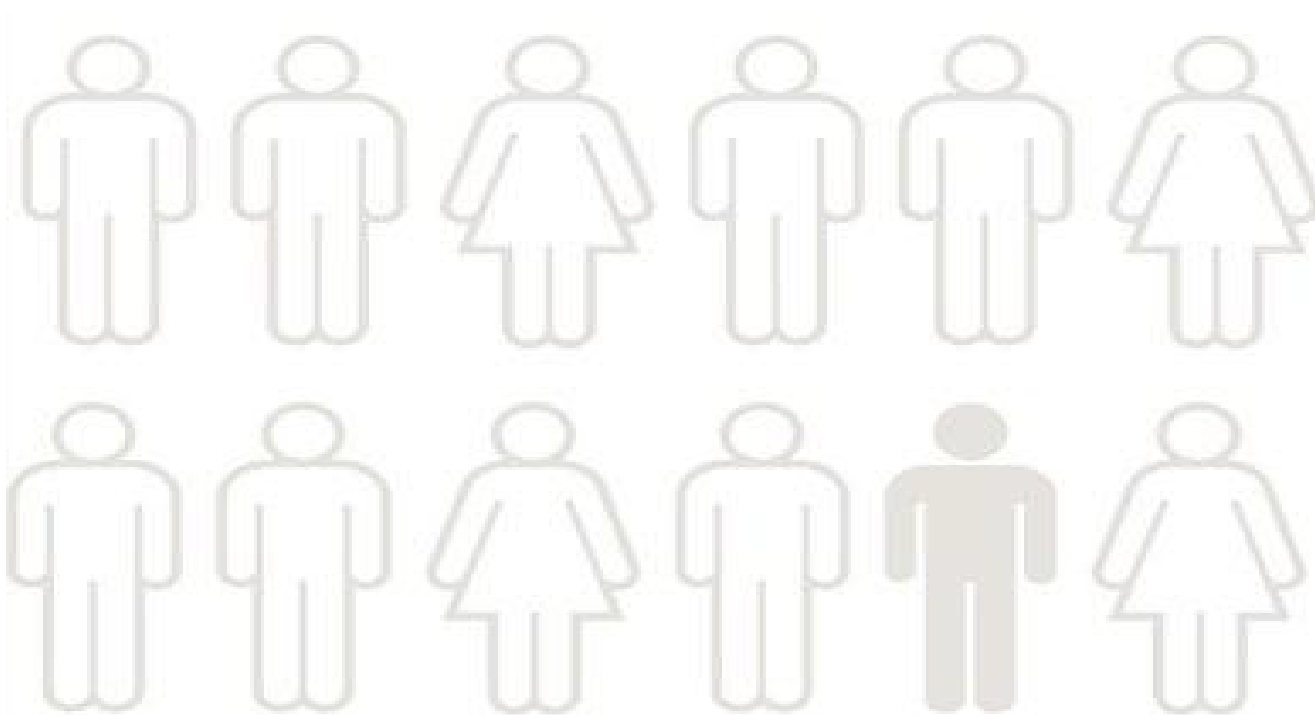
# Improving Access to Bowel Screening for People with a Learning Disability

Peter Nash

South Tyneside NHS Foundation Trust



The lifetime risk of developing bowel cancer in the UK is 1 in 14 for men and 1 in 19 for women. It is 1 in 16 for people in the UK overall Those with a learning disability are more at risk of bowel cancer since bowel cancer is associated with obesity, poor diet and lack of exercise (Read and Latham 2009, DOH 2013)

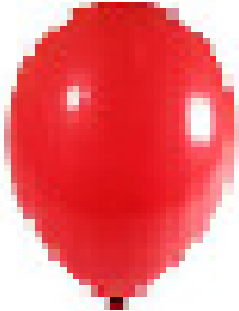
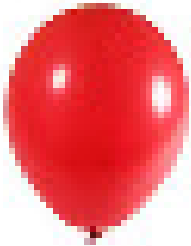


## Improving access



Relative rates of screening for all four cancers were significantly lower for people with learning disability. Bowel Screening 57.8 per cent of total population; 28.1 per cent of people with Learning Disability (Tizard Learning Disability Review 2014)

**BOWEL CANCER**



**THE LONGER**

**YOU LEAVE IT**

**THE BIGGER**

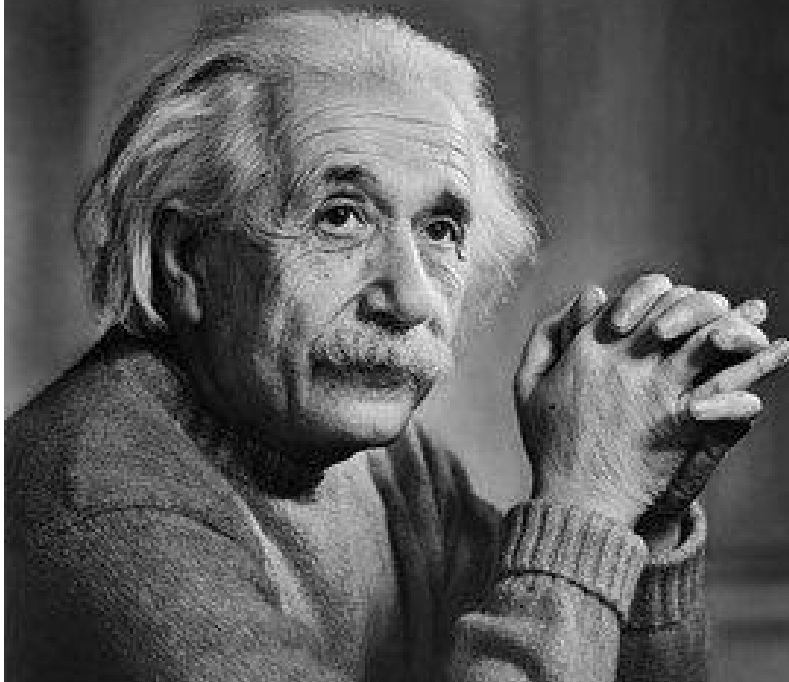
**IT GETS**

## Preventing Avoidable Deaths



If you can't explain it **simply**, you  
don't understand it well enough.

– Albert Einstein





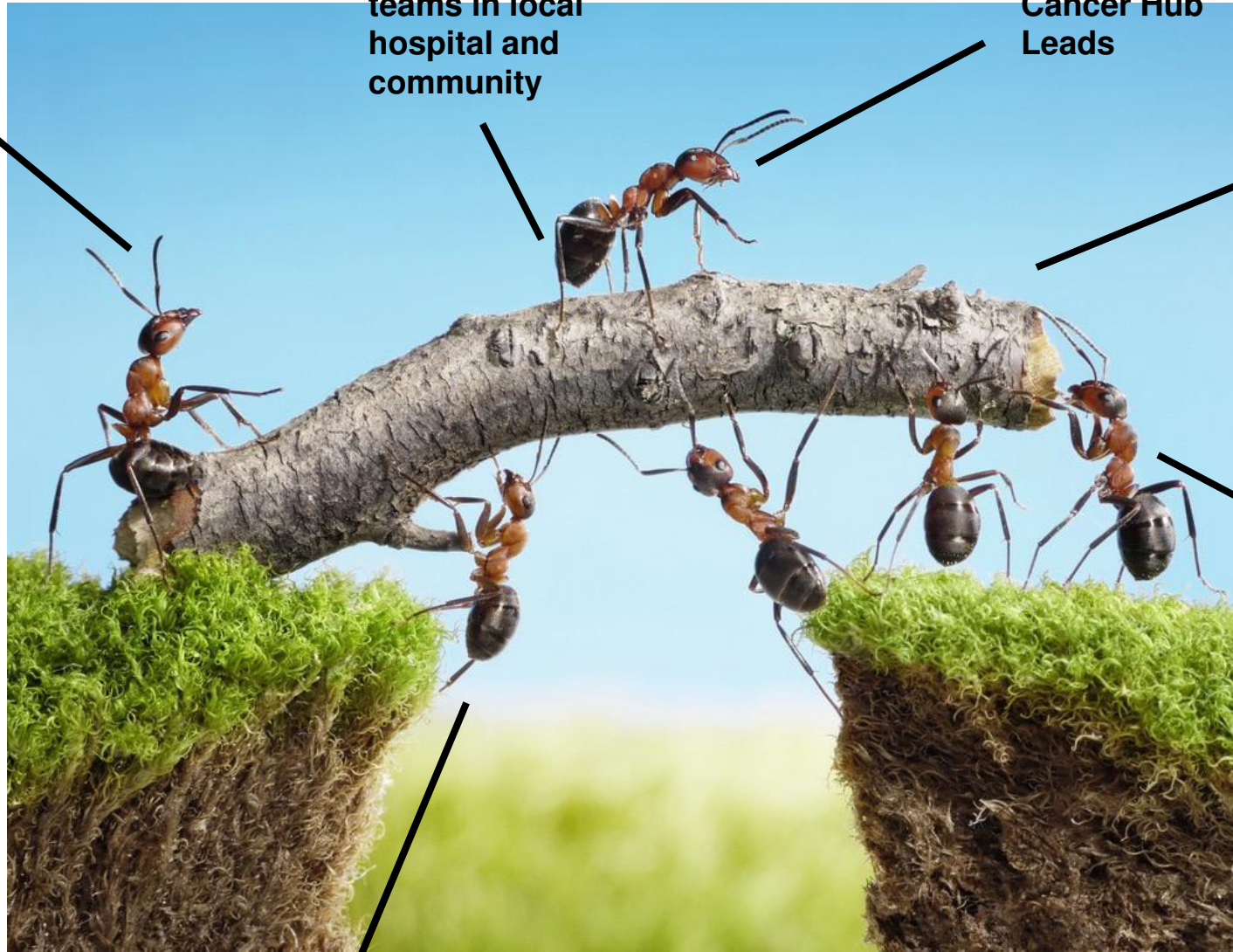
***EQUAL TREATMENT – CLOSING THE GAP***



**Carers/  
families**

**Local screening  
teams in local  
hospital and  
community**

**Regional  
Cancer Hub  
Leads**



**Service  
users**

**Health focus  
groups**





The person, CLDT, carers and families were now more aware of the importance of bowel screening and how to support the person with a learning disability to undertake the test.

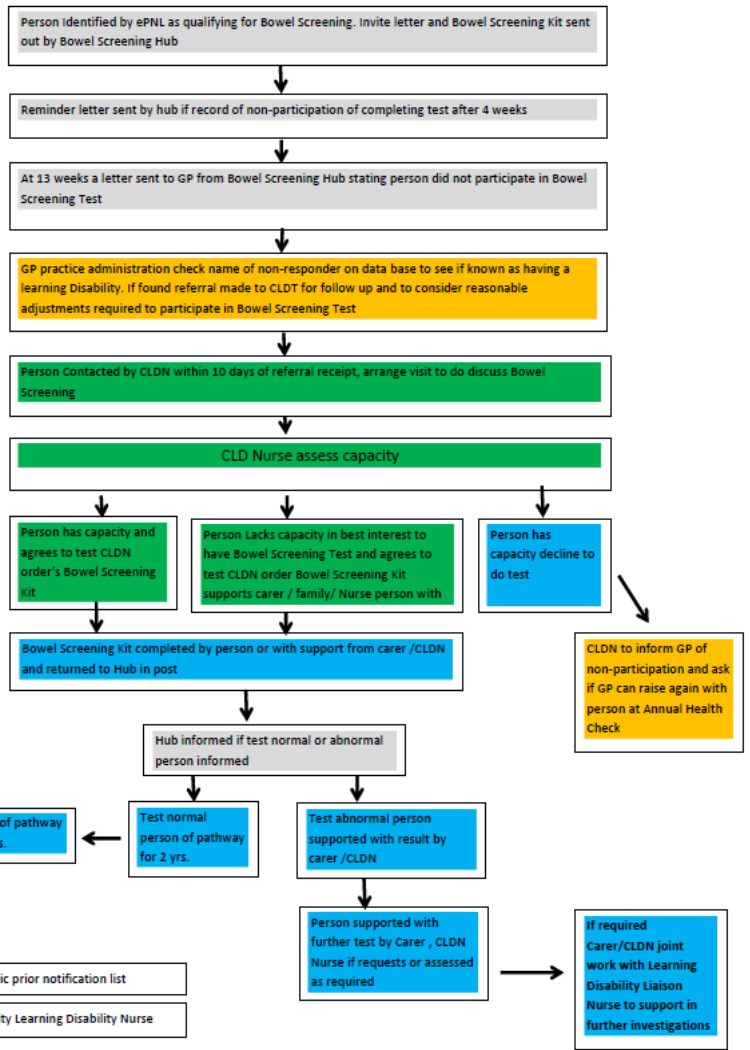
The Health Action Plan Database was updated

A pathway now exist between GPs and the CLDT for non-responders

CLDT are now trained in how to support someone with a learning disability to complete a bowel screening test.

	<u>Pre</u>	<u>Post</u>		
<u>Project outcome</u>				
Had BS discussed	72(22%)	193(80%)	58%	↑
Completed BS test	34(48%)	117(61%)	13%	↑
Followed up	0 (0%)	117(100%)	100%	↑
NFA	None noted	99 (85%)		↑
RFA	None noted	18 (18%)		↑
Declined	38(53%)	32 (13%)	40%	↓

**Bowel Screening Pathway for people with a learning disability  
Gateshead and South Tyneside Community Learning Disability Team and GP Practices**





**I AM DIFFERENT  
YES THAT'S TRUE  
BUT IS MY LIFE  
NOT WORTH THE  
SAME AS YOU?**