

# Support for Caregivers, Friends and Family

## ‘Butterfly Cornwall’

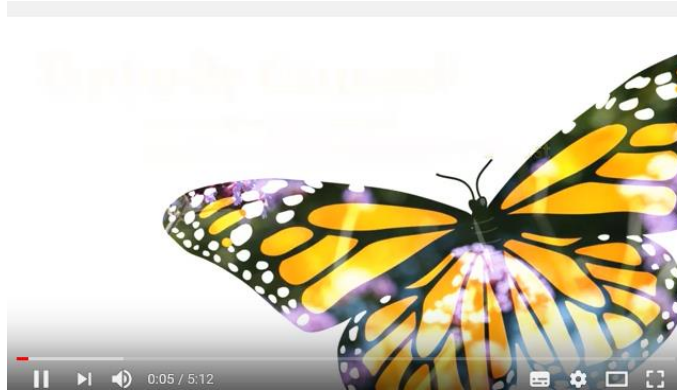


**A scheme to enhance end of life care for patients and their loved ones**

Liz Thomas, Lead Practitioner – Palliative and End of Life Care  
Steph Brelsford, Specialist Nurse – Palliative and End of Life Care



 [@rchtpallandeol](https://twitter.com/rchtpallandeol)



<https://www.youtube.com/watch?v=cX0oOMprucc&feature=youtu.be>





## What is it?

An approach to delivering **personalised, compassionate care in the acute setting**



## Goal to improve end of life care by:

- ◆ Supporting staff confidence, knowledge and skills
- ◆ Encourage effective communication between staff, patients and carers
- ◆ Improve symptom control knowledge



## Goal to improve end of life care by increasing staff confidence



- ◆ 50% staff trained before roll-out on ward
- ◆ Short ward based sessions on anticipatory prescribing, completion of end of life documentation, how to use the scheme.

## Goal to improve end of life care by increasing staff confidence

### Communication

- ◆ Butterfly magnets on whiteboards/side room doors
- ◆ Dignity clips for curtains
- ◆ Letter to patients explaining the scheme
- ◆ Identify what's important to the patient
- ◆ Looking after relatives/carers. What do they need?



Aspiring to provide **Brilliant** care to One + all



Being **Brilliant** is up to us, One + All

## Documentation

- ◆ Encourages completion of end of life care plan through ward based teaching
- ◆ TEP/DNAR

## Training

- ◆ Short was based sessions that address core issues
- ◆ Extend training sessions offered via training needs analysis







- ◆ Wedding boxes
- ◆ Comfort bags
- ◆ Belongings bags
- ◆ Meal vouchers
- ◆ Pet visits
- ◆ Parking permits
- ◆ Rainbow Days



## Improving environments for patients approaching end of life

- ◆ Guest beds for each ward
- ◆ CD Players
- ◆ Crochet and Fleece Blankets
- ◆ Local Artwork





Our progress one year on !





- ◆ Introduced at Mandatory Training
- ◆ All adult inpatient areas at the Treliske site are 'live' and training is ongoing with the other sites
- ◆ Out of Hours comfort boxes available across the site
- ◆ Over 75 staff have been nominated for a Rainbow badge and certificate for providing enhance EOL care



# Rainbow Days – adding colour to someone's day



## Our Challenges ...

- ◆ Time constraints on team
- ◆ Rolling out change in the acute setting
- ◆ Releasing staff for study sessions



## Our lessons learnt ...



- ♦ Working alongside staff in the clinical areas is effective and supportive
- ♦ Recognising the challenges in implementing change in clinical areas – staff shortages
- ♦ Take the education to the staff – tea and cake sessions

## Staff Feedback

“Great idea to have dedicated side rooms for end of life care, a dream”

“This is what really matters”

“Has really enabled me to provide better support to patients/relatives, fantastic idea”

“Has really enabled me to provide better support to patients/relatives, fantastic idea”







## Relative Feedback

“We cannot thank you all enough for the care that my husband Keith received, also for the care taken of us as a family. We all felt that all the staff were there for us and genuinely felt that we could ask anything. It was all very much appreciated.”

“It enabled us to spend precious time with our Mum and be with her day and night. Thank you.”





## Sustainability

- ◆ Embedded into End of Life Care Plan
- ◆ Mandatory Training
- ◆ Financial support from Charitable Funds, Macmillan and League of Friends
- ◆ Dying Matters Week
- ◆ Data collection







“You matter because you are you, and you matter to the end of your life. We will do all we can, not only to help you die peacefully, but also live until you die.”

**Dame Cicely Saunders**





Thanks for listening

