



ADDENBROOKE'S HOSPITAL CANCER PATIENT PARTNERSHIP GROUP (CPPG)

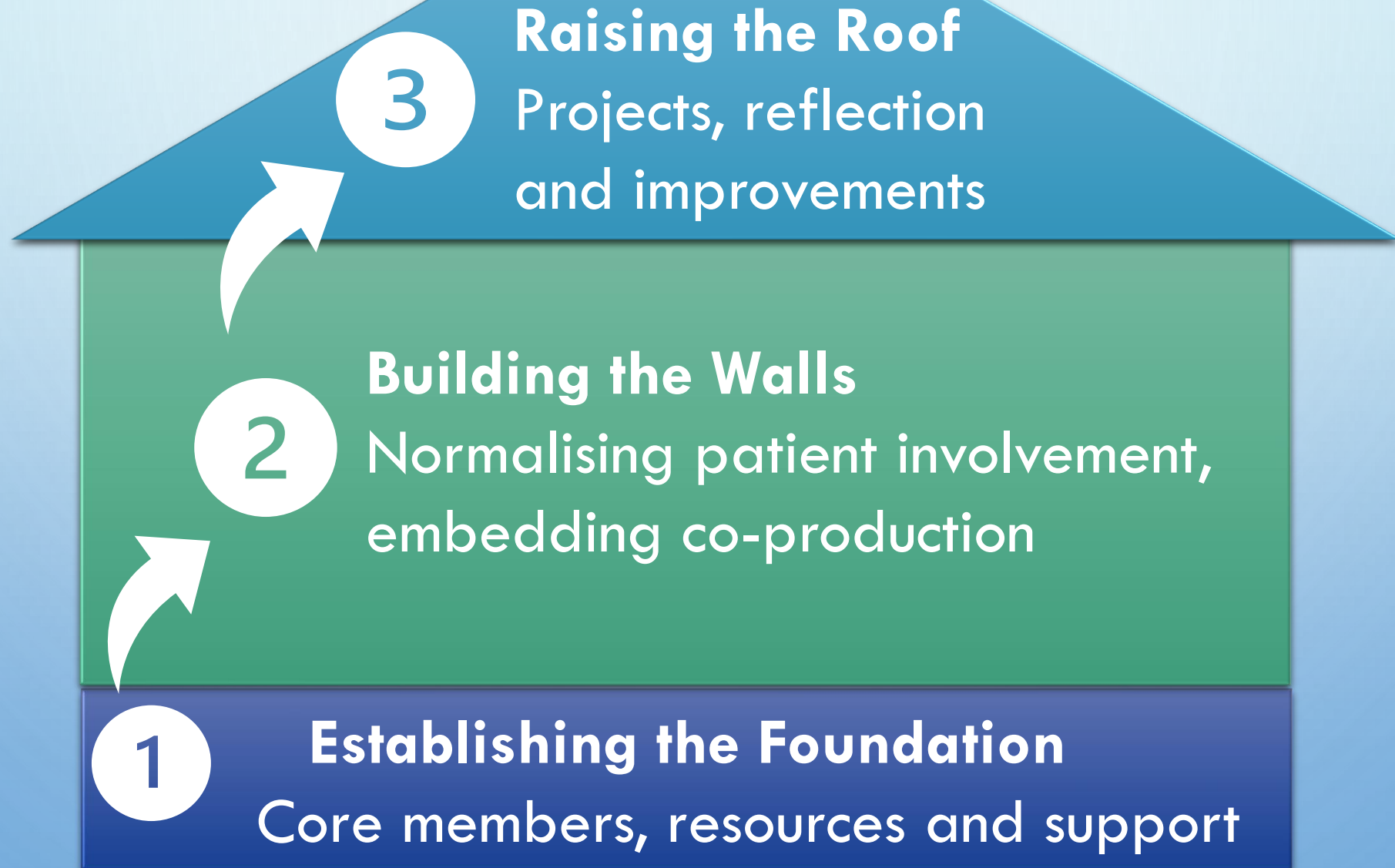
ENGAGING & CHAMPIONING THE PUBLIC

HANNAH BELLEW (CPPG PATIENT CO-CHAIR)

LENJA BELL (MACMILLAN CO-PRODUCTION LEAD)

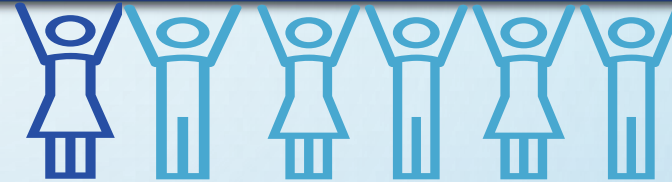
ELAINE CHAPMAN (LEAD CANCER NURSE & CPPG STAFF CO-CHAIR)

Brick-by-Brick: Building Sustainable Patient Involvement and Co-Production



1

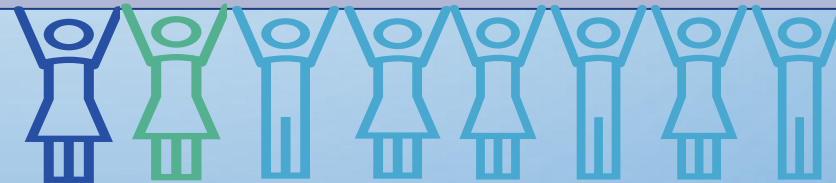
Establishing the Foundation: Lead Cancer Nurse and five patients started the CPPG



Recognised need for patient involvement to provide outstanding care

Identified need for resources to facilitate patient involvement & co-production

Created and recruited to a Co-Production Lead post as a **Linchpin** between patients, staff & partners



Received continuous and essential support from **Senior Management**



2

Building the Walls: Normalising patient involvement, embedding co-production

Patient and staff CPPG
members worked with
Co-Production Lead to:

Create patient and staff
co-chairs

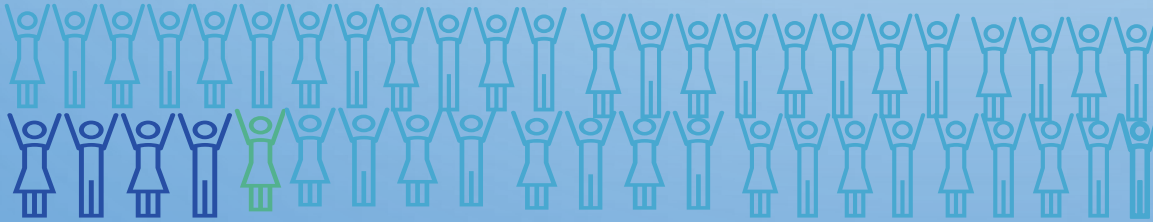
Attend regular meetings
with Senior Management

Restructure the group with
flexible two tier membership

Foster a shift in culture via
staff training and video

Create ongoing patient
representation at strategic
boards and meetings

Grow membership from 10 to 55+ members



3

Raising the Roof: Projects, reflection and improvements

Patient Information

Reviewing, improving
and creating written
information with patients
and staff

Patient Communication

- Please write to me
- #CallMe - patient's preferred name
- Rapid Covid response

Environment & Patient Flow

- Oncology Outpatients refurbishment
- New Cambridge Cancer Research Hospital

The Addenbrooke's Cancer Patient Partnership is working from home during the pandemic, using our experience as Cancer patients to work with clinicians and make things better.

Make the Future Better for Cancer Patients



From filling in a survey, to workshopping solutions with clinicians, there's a role for everyone's schedule. If you're interested in hearing more, send us an email: cppg@addenbrookes.nhs.uk



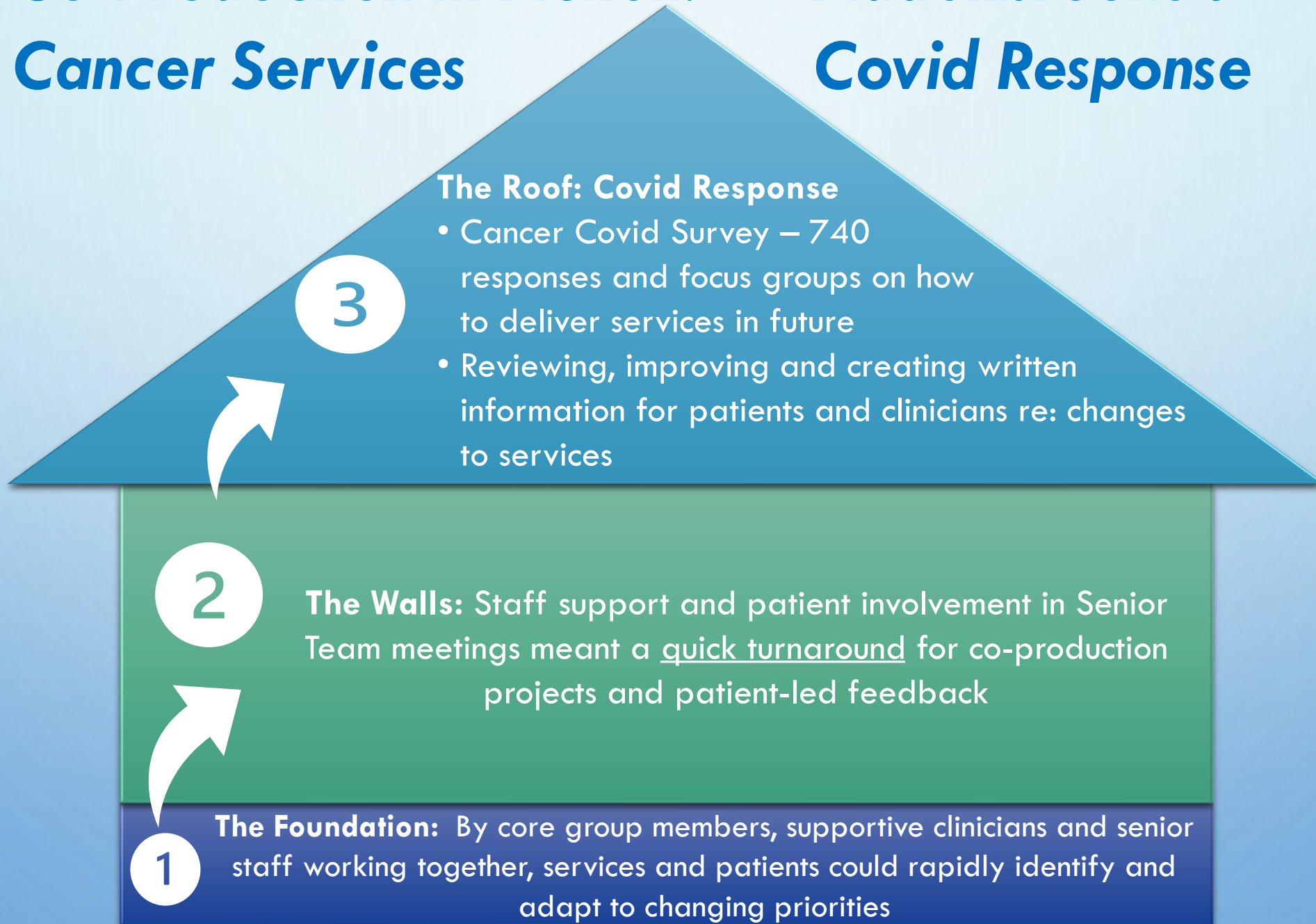
Cancer During The Pandemic?

Do you Have a Positive Addenbrooke's Story to Share?

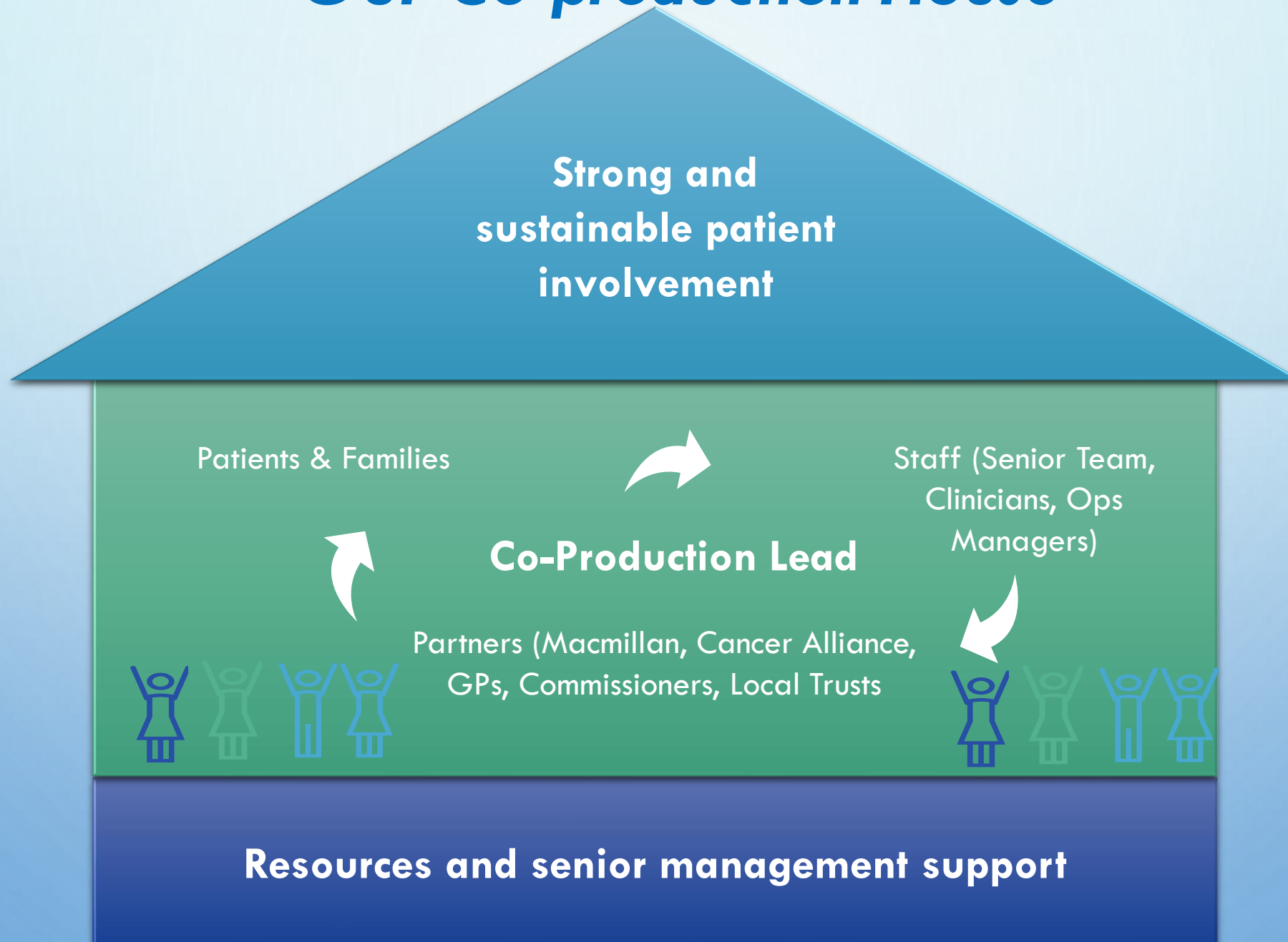
We are collecting feedback to share with keyworkers at Addenbrooke's. Let us know yours: cppg@addenbrookes.nhs.org

Co-Production in Action: Cancer Services

Addenbrooke's Covid Response



Our Co-production House



Keeping the House Standing – Ensuring future success

**Successful
co-production
projects lead to long-
term sustainability**



Staff induction &
training

Working with
partner
organisations

Active patient membership

**Facilitation by
Co-Production Lead**

Patients as partners on
strategic boards

Continuous
promotion and
recruitment -
Patients' Voice
newsletter, staff
briefings, social
media

Continuous resource and senior management support

Keeping the House Standing

Our Co-Production Video



THANK YOU!

CPPG@ADDENBROOKES.NHS.UK

