



# **ADDENBROOKE'S HOSPITAL CANCER PATIENT PARTNERSHIP GROUP (CPPG)**

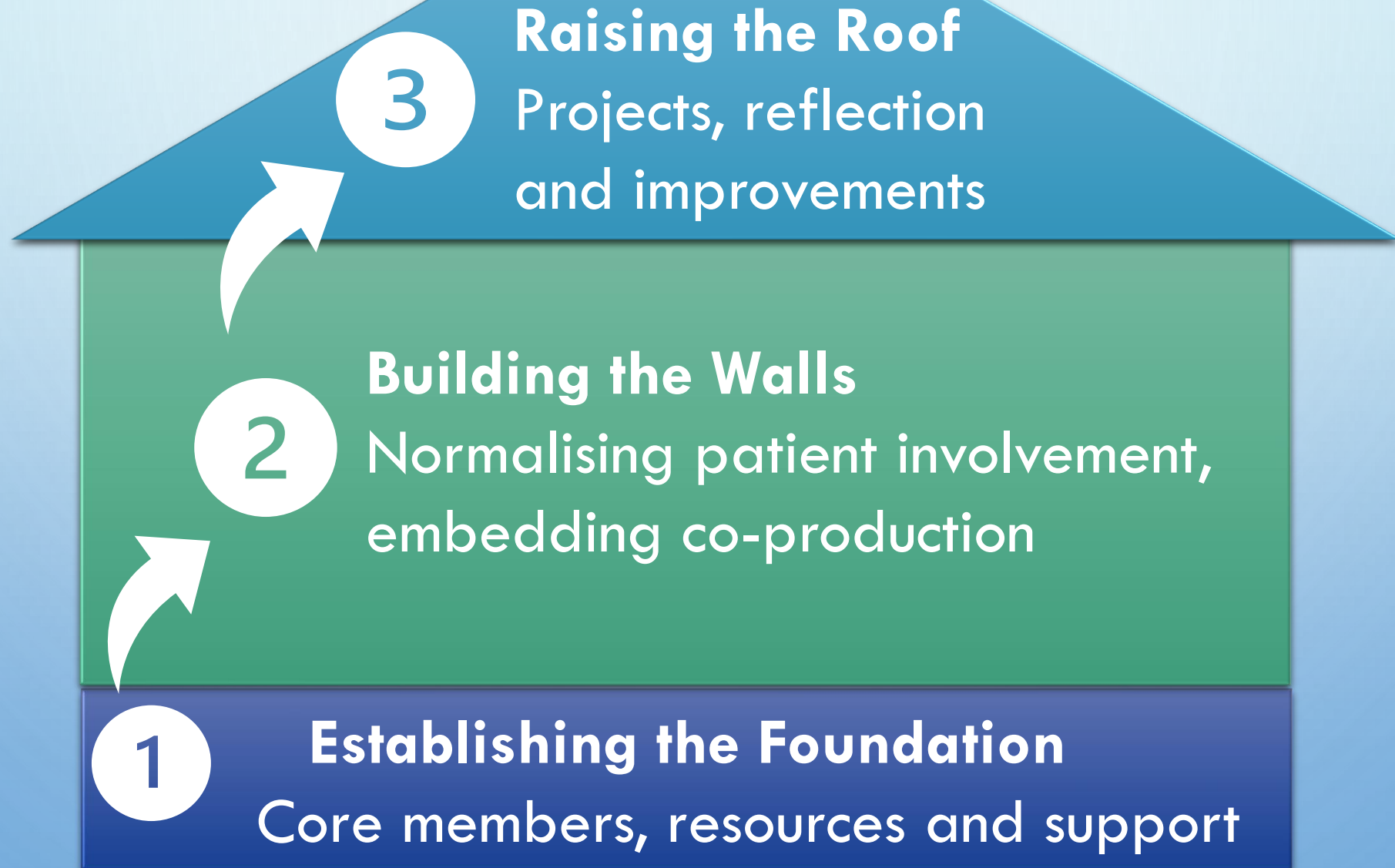
## ***STRENGTHENING THE FOUNDATION***

**HANNAH BELLEW (CPPG PATIENT CO-CHAIR)**

**LENJA BELL (MACMILLAN CO-PRODUCTION LEAD)**

**ELAINE CHAPMAN (LEAD CANCER NURSE & CPPG STAFF CO-CHAIR)**

# ***Brick-by-Brick: Building Sustainable Patient Involvement and Co-Production***



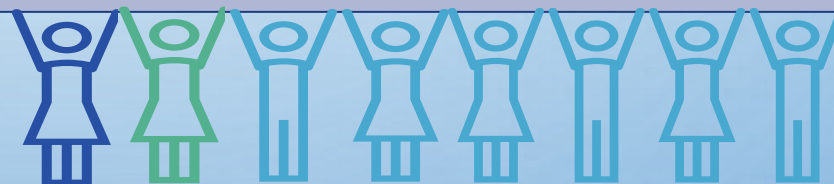
# 1 Establishing the Foundation: Lead Cancer Nurse and five patients started the CPPG



Recognised need for patient involvement to provide outstanding care

Identified need for resources to facilitate patient involvement & co-production

Created and recruited to a Co-Production Lead post as a **Linchpin** between patients, staff & partners



Received continuous and essential support from **Senior Management**



2

## Building the Walls: Normalising patient involvement, embedding co-production

Patient and staff CPPG  
members worked with  
Co-Production Lead to:

Create patient and staff  
co-chairs

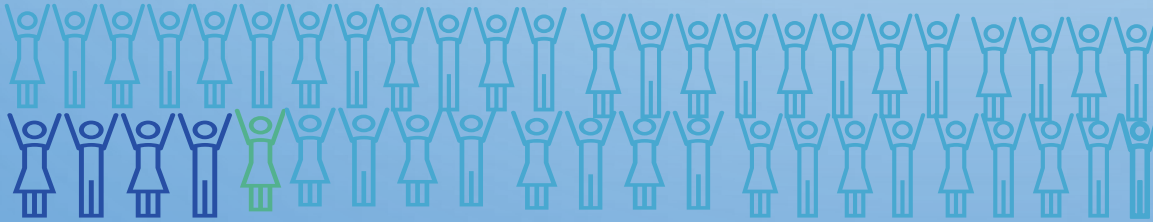
Attend regular meetings  
with Senior Management

Restructure the group with  
flexible two tier membership

Foster a shift in culture via  
staff training and video

Create ongoing patient  
representation at strategic  
boards and meetings

Grow membership from 10 to 55+ members



# 3

## Raising the Roof: Projects, reflection and improvements

### Patient Information

Reviewing, improving  
and creating written  
information with patients  
and staff

### Patient Communication

- Please write to me
- #CallMe - patient's preferred name
- Rapid Covid response

### Environment & Patient Flow

- Oncology Outpatients refurbishment
- New Cambridge Cancer Research Hospital

The Addenbrooke's Cancer Patient Partnership is working from home during the pandemic, using our experience as Cancer patients to work with clinicians and make things better.

### Make the Future Better for Cancer Patients

From filling in a survey, to  
workshopping solutions with  
clinicians, there's a role for  
everyone's schedule.  
If you're interested in hearing  
more, send us an email:  
[cppg@addenbrookes.nhs.uk](mailto:cppg@addenbrookes.nhs.uk)



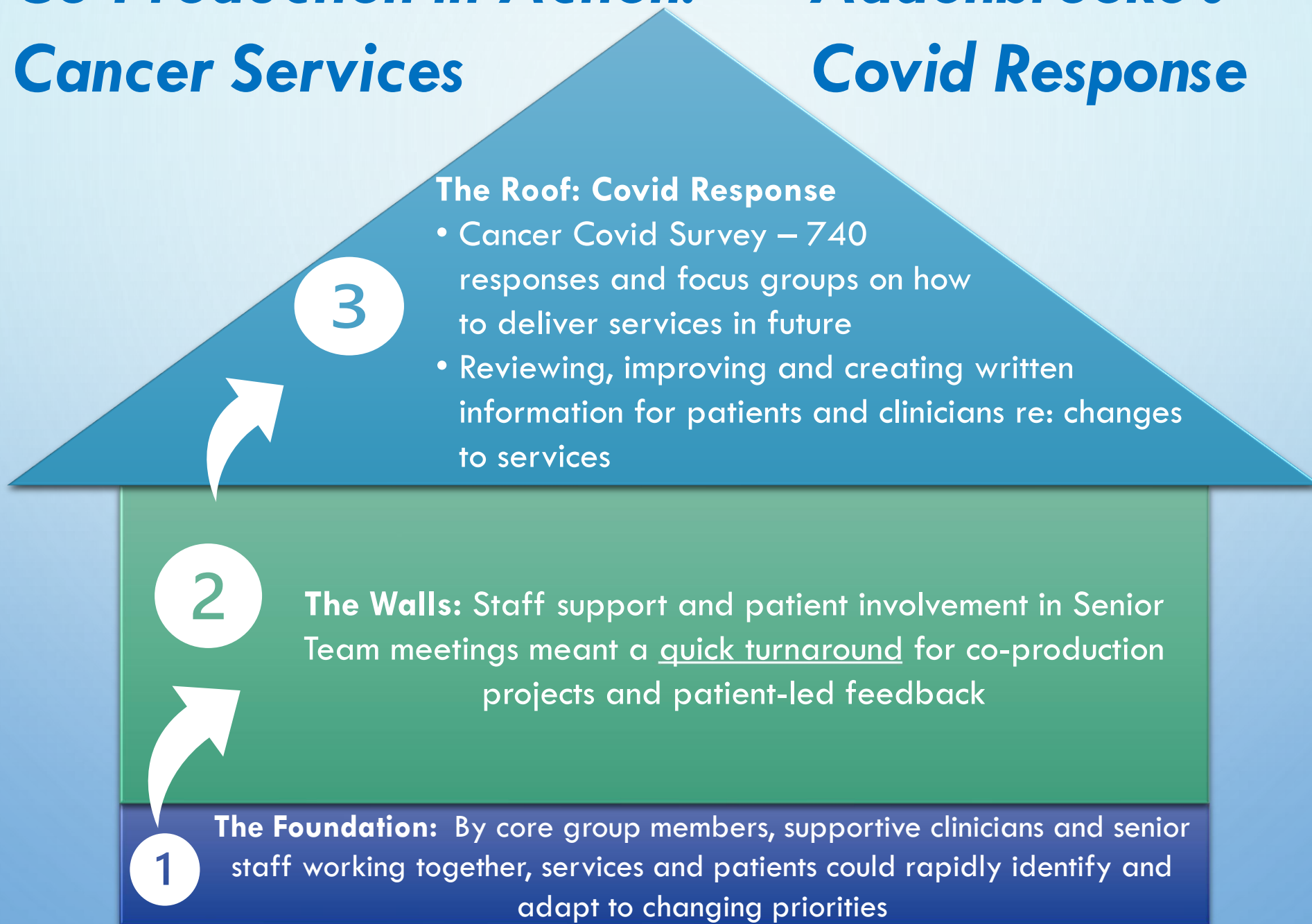
### Cancer During The Pandemic?

Do you Have a  
Positive  
Addenbrooke's  
Story to  
Share?

We are collecting  
feedback to share with  
keyworkers at  
Addenbrooke's.  
Let us know yours:  
[cppg@addenbrookes.nhs.org](mailto:cppg@addenbrookes.nhs.org)

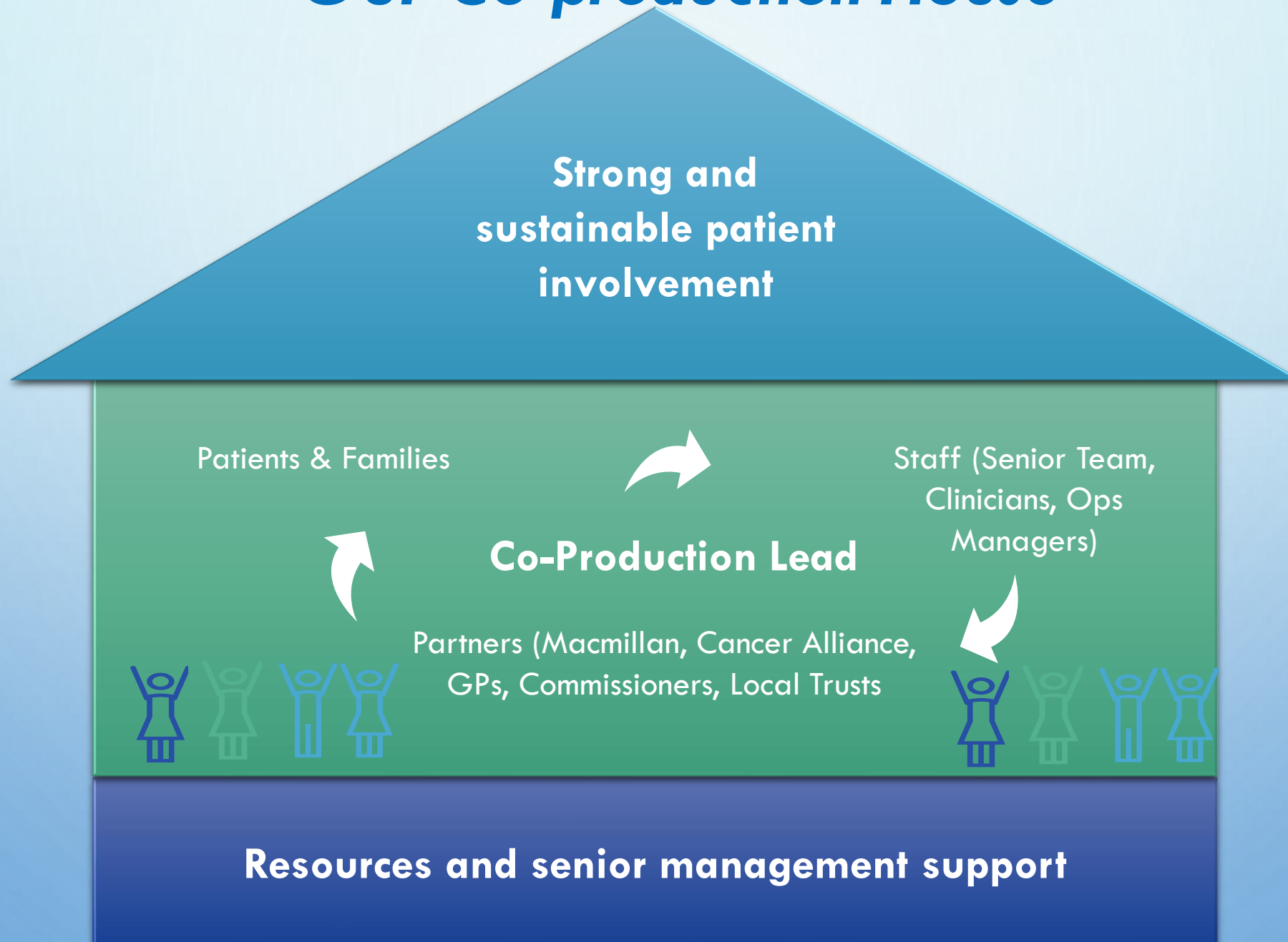
# Co-Production in Action: Cancer Services

# Addenbrooke's Covid Response





# ***Our Co-production House***



# ***Keeping the House Standing – Ensuring future success***

**Successful  
co-production  
projects lead to long-  
term sustainability**



Staff induction &  
training

Working with  
partner  
organisations

Active patient membership

**Facilitation by  
Co-Production Lead**

Patients as partners on  
strategic boards

Continuous  
promotion and  
recruitment -  
Patients' Voice  
newsletter, staff  
briefings, social  
media

**Continuous resource and senior management support**



# *Keeping the House Standing*

## Our Co-Production Video

<https://vimeo.com/395135251>

# THANK YOU!

[CPPG@ADDENBROOKES.NHS.UK](mailto:CPPG@ADDENBROOKES.NHS.UK)

