

Emma Tucker

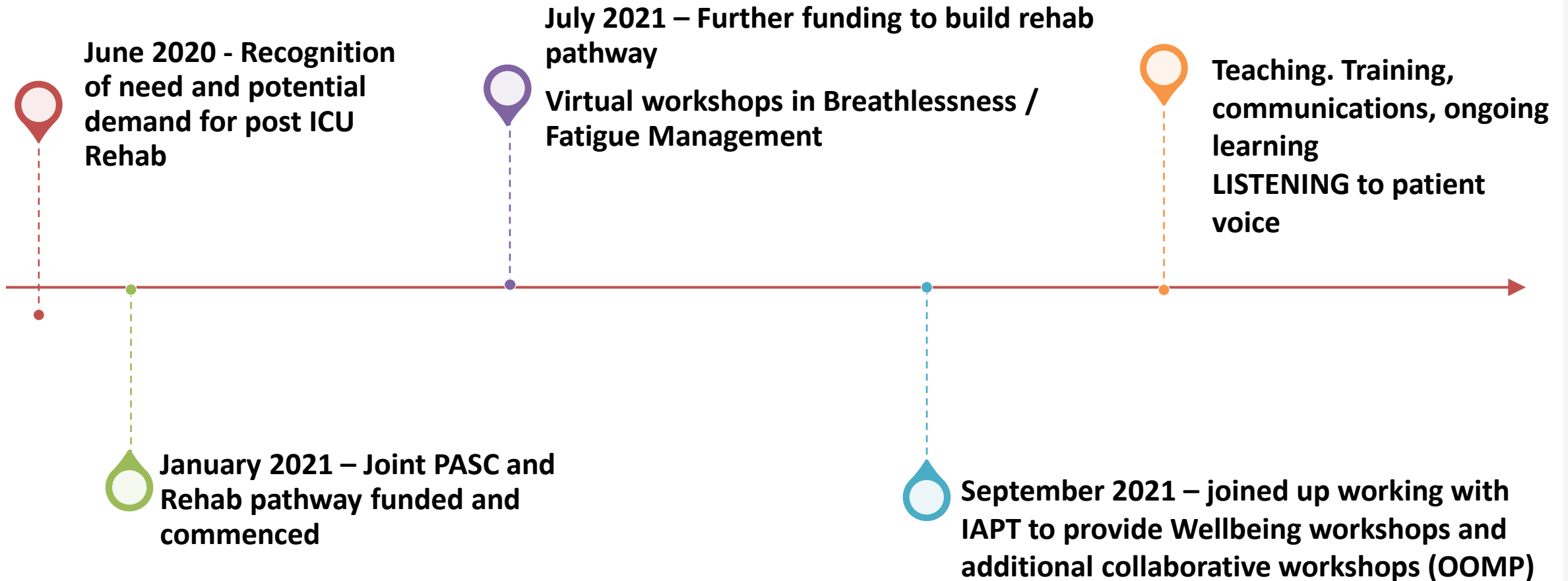
Specialist Respiratory Physiotherapist
Post COVID Rehabilitation Coordinator
Oxford Health NHS Foundation Trust



Key Themes

- Evolution
- Collaboration
- Patient Voice
- Communication

Evolution of Service





Caring, safe and excellent

PATIENT VOICE

NHS

Oxford Health
NHS Foundation Trust



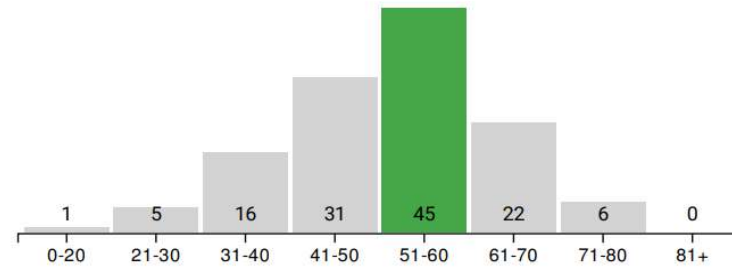
Community Services - Oxford Health NHS Foundation Trust Post COVID Rehab Team

01 May 2021 -
31 May 2022

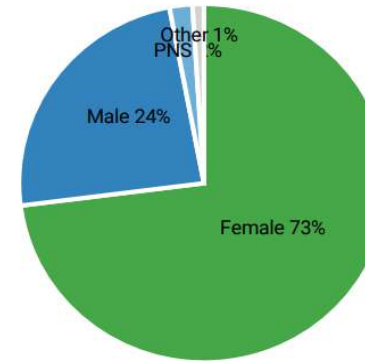
Reviews this period

129

Reviews by patient's age



Reviews by patient's gender



Average score this period

4.83



Your Experience Scores

5 Star Score

4.78

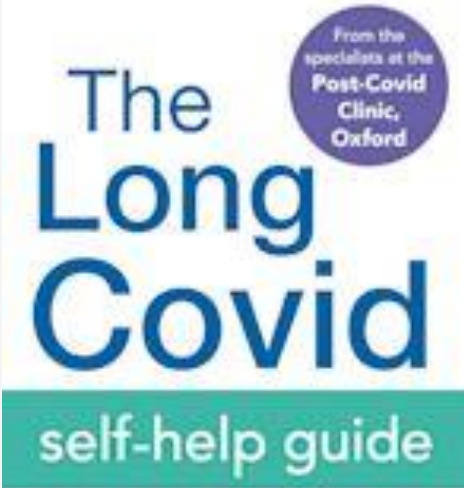
% Positive experience

98.4%

% Negative experience

0.8%





What does the future hold for Long COVID patients? What do we know about this new condition? How can we treat it?

Dr Emily Fraser, Consultant in Respiratory Medicine
Clinical lead for the Post-Covid Assessment Clinic

Emma Tucker, Specialist Respiratory Physiotherapist
Post-Covid Rehabilitation Coordinator



NHS England South East

AHPs in focus: November 2021 – Long COVID



Post COVID-19 Webinar

Presenters:

- Dr David Chapman – GP and Mental Health Lead OCG
- Dr Ahmad Saif – Health Education England
- Dr Emily Fraser – Respiratory Consultant OUH
- Dr Anton Pick – Consultant in Rehabilitation Medicine OUH
- Emma Tucker – Post COVID Rehabilitation Lead OH
- Rachael Rogers – Clinical Lead Chronic Fatigue; Post COVID Rehabilitation OH
- Dr Heather Salt – Consultant Clinical & Health Psychologist OH





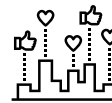
Care does not need to have boundaries.



Collaboration, responsiveness, respect, listening to colleagues and patient voice are the key to an effective and successful service.



Flexibility to change and adapt on a daily and weekly basis is key to enabling patient centered care.



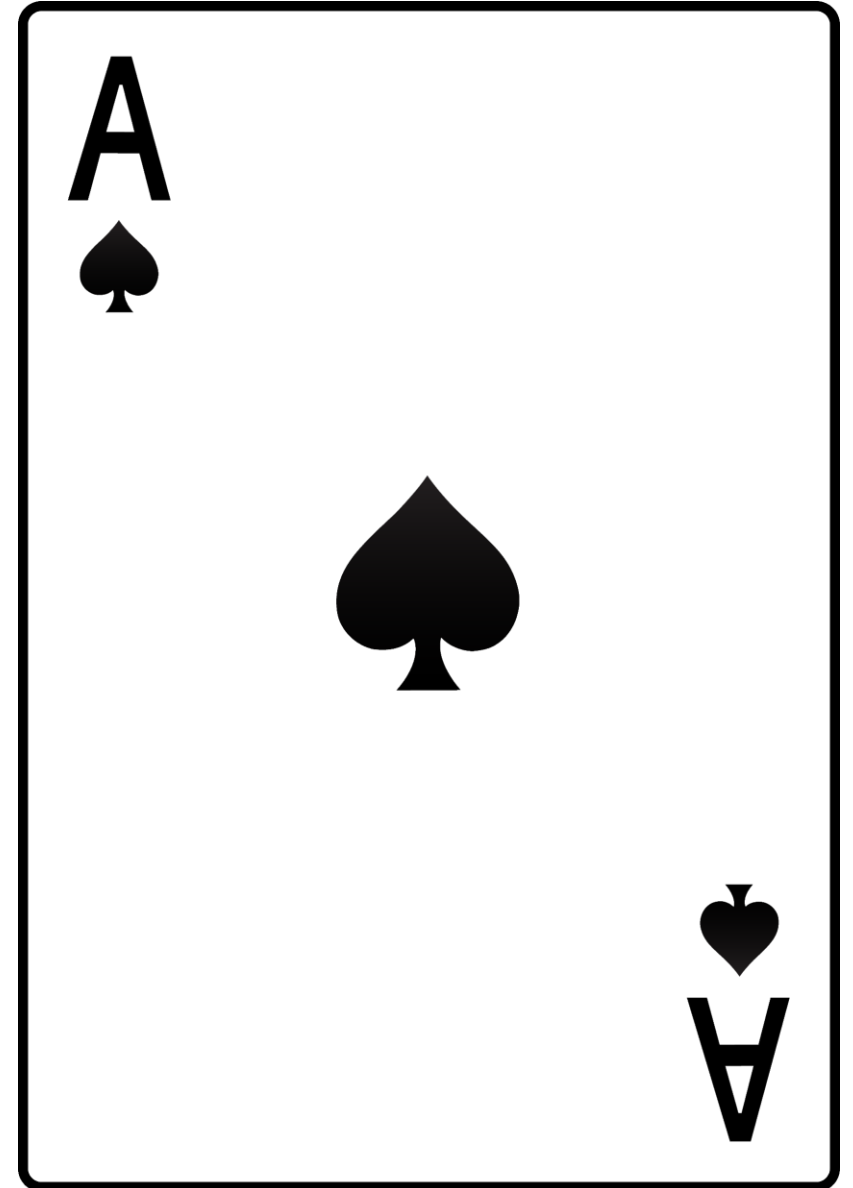
Sharing and communicating practice, learning, and mistakes ensure up to date evidence-based experience.



Hearing and responding to patient voice – internally within service, nationally within forums, and other health care professionals living with long COVID is paramount.

Closing remark

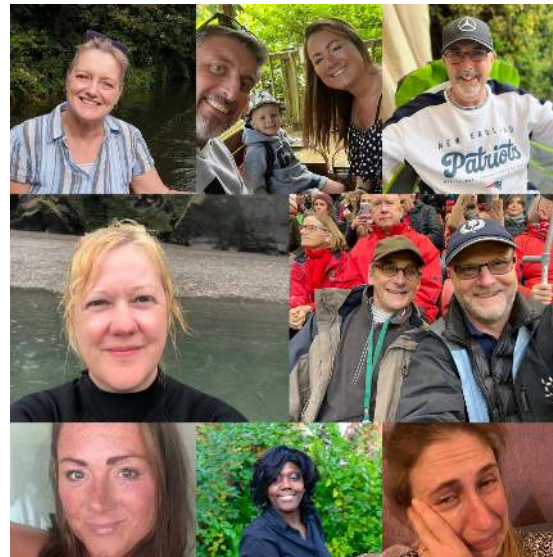
*“You guys are ace in my
eyes”*



Oxford Health
NHS Foundation Trust

Oxford University Hospitals
NHS Foundation Trust

Buckinghamshire, Oxfordshire
and Berkshire West
Integrated Care Board



Emma.tucker@oxfordhealth.nhs.uk

@emtucks

BLOOMSBURY

Useful resources

- [Guideline COVID-19 rapid guideline: managing the long-term effects of COVID-19 \(nice.org.uk\)](https://www.nice.org.uk/guidance/ng195)
- [A clinical case definition of post COVID-19 condition by a Delphi consensus, 6 October 2021 \(who.int\)](https://www.who.int/publications-detail/clinical-case-definition-of-covid-19)
- [Your COVID Recovery | Supporting your recovery after COVID-19](#)
- [OH-090.20-Post-COVID-Leaflet.pdf \(oxfordhealth.nhs.uk\)](#)
- [You are not alone - The long COVID service – YouTube](#)
- [Physiotherapy for breathing pattern disorders resources for physiotherapists \(physiotherapyforbpd.org.uk\)](https://physiotherapyforbpd.org.uk/resources)
- [Post-COVID Syndrome \(Long COVID\) – RCOT](#)
- [Support for Rehabilitation: Self-Management after COVID-19 Related Illness \(who.int\)](https://www.who.int/publications-detail/support-for-rehabilitation-self-management-after-covid-19-related-illness)
- [Long Covid | World Physiotherapy](#)