

Empowering our Communities



RBWM live, bespoke and structured community engagement and empowerment programme ensuring residents' voices are heard.

A partnership between RBWM & NHS Frimley.

Objectives

- Utilise World Café concept to identify what matters *to residents* using asset-based community development and co-productive approach ensuring inclusivity
- Provide seed funding to encourage, kick start and support community ideas from the World Cafés
- Capacity building of Community Champions as ambassadors of support and engagement
- Provide clear frameworks of evidence, evaluation and impact through **'You Said, We Did'** and continual learning.....



| World Cafés Across RBWM

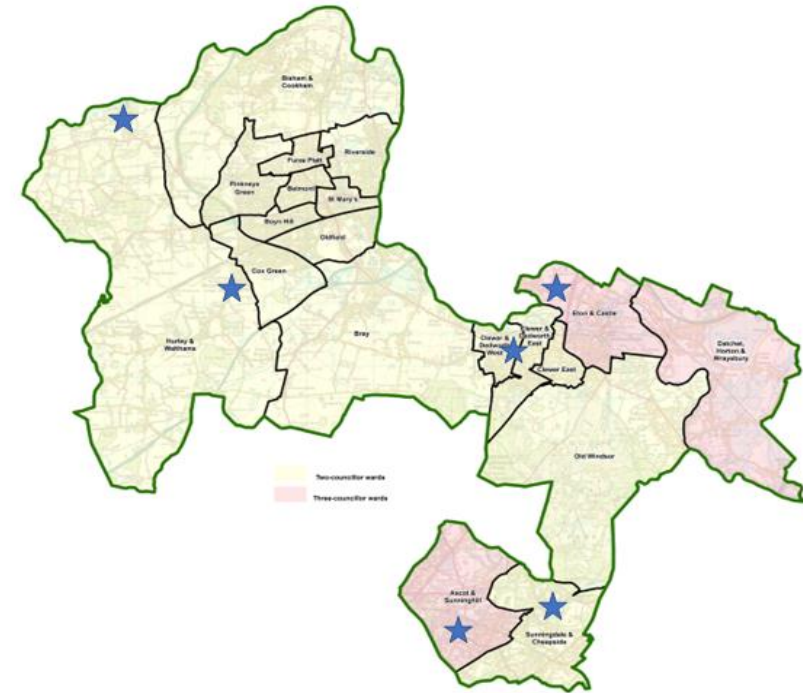
- World Café concept engages communities and provides listening process, identifying residents 'concerns' - **'You Said'...**
- Planning commenced April 2022
- First World Café June 2022
- Six World Cafés completed by 28/9/22
- We aim to complete the programme by Summer 2023
- Easy read flyers / reasonable adjustments



World Café Locations

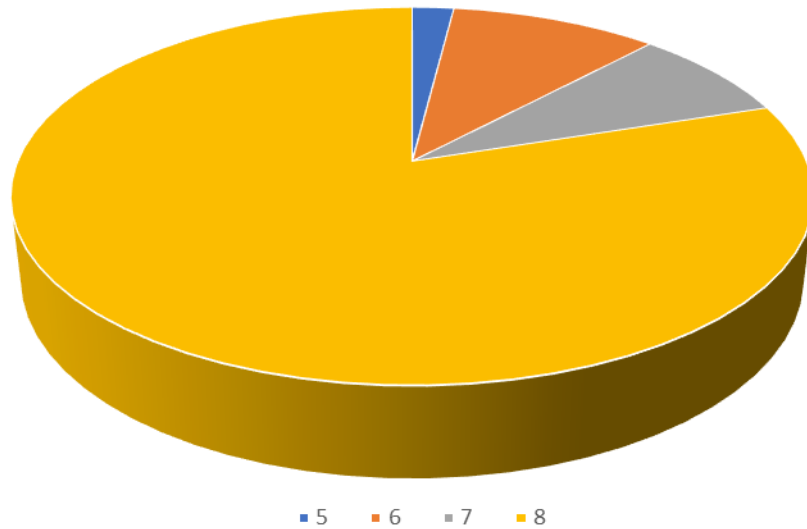
Wards visited:

1. Clewer East & Clewer and Dedworth West
2. Ascot & Sunninghill
3. Hurley
4. Clewer and Dedworth West
5. The Walthams
6. Eton & Castle (and Eton Wick)

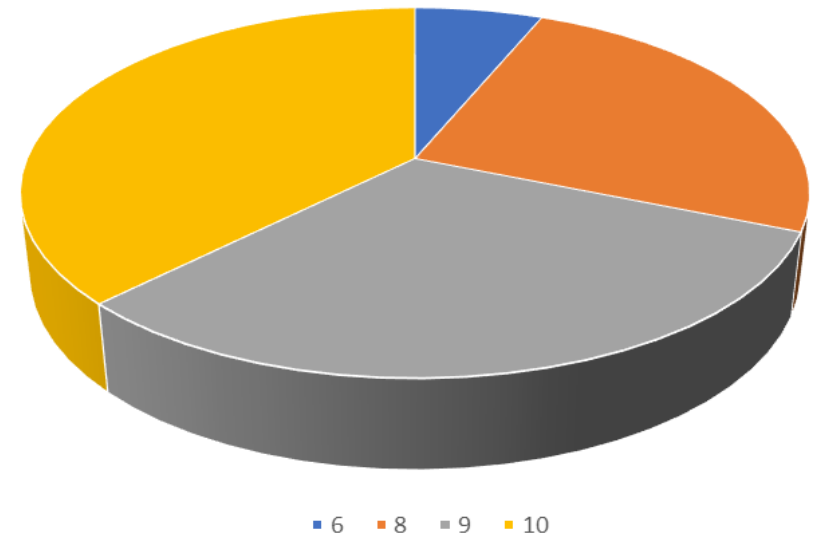


Feedback

Walthams - Participant Rating Out Of 10



Clewer & Dedworth West - Participant Rating Out Of 10



Feedback

"Great ideas, good views from a mix of people"

"Best part of the day was networking!"

"Fantastic opportunity to share ideas and listen to others!"

"There was a buzz in the room when we arrived"

"Brilliant event. Very nice to know there are many services to help with the community"

| Multi-Agency Approach



| Multi-Agency Approach



Empowering our Communities

Multi-Agency Approach



Empowering our Communities

| Resident





Positive Outcomes

- Food Network Group
- Community Garden empowers communities to take care of their health and wellbeing and grow their own produce
- Budgeting courses with our adult learning provider, to be delivered in September



Positive Outcomes

- Increased awareness amongst wider organisations
- Ingraining World Café concept within other areas of practice, creating blueprint of good practice
- Increased collaborative partnership working with VCS and community groups



Positive Outcomes

- Rather than provide deficit approach (focuses on problems), ABCD approach concentrates on community assets whilst providing a framework for:
 - Understanding community's concerns and how to utilise their skills and capabilities
 - Enhance independence, resilience, autonomy and self-sustainability



Tai Chi for Better Health – for seniors (successful
RBWM Innovation Fund applicant, stage 1)

| Successes: Stage 1

- Nine successful applicants
- Building community led solutions established by VCS with little/no funding
- **Example:** Boundary Walk - revived to address health and wellbeing concerns raised, supported by seed funding, led by over 10 community individuals, five-year lifeline with no other funding required
- Additional annual/rolling funding received
- Established as rolling project

Stage 2: currently live – closing date 30/09/22

| Community Champions

Capacity Building: recruit 500 by summer 2023

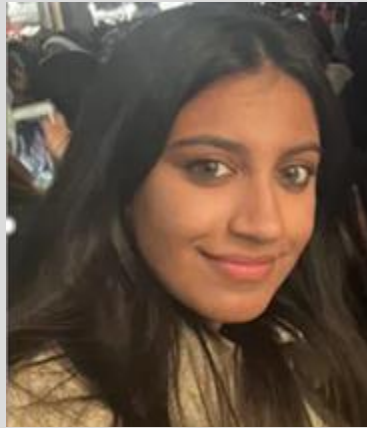
- Recruitment and training of additional Community Champions provides added support ensuring hard-to-reach communities are engaged, trusted relationships formed, and health inequalities are addressed
- Training community members to become facilitators to hold their own World Café events ensures sustainability
- Other areas can adapt this model to grow a vibrant community sector that starts to build local resilience



| Delivery Team



Jesal Dhokia
RBWM Strategic Lead



Sumayyah Zeib
RBWM Community Engagement Officer



Nicky Smith
NHS Frimley Lead

#RBWMWorldCafe

[World Cafes | RBWM
Together](#)

#RBWMInnovationFund

[RBWM Innovation Fund
Project | RBWM Together](#)