

# **North East North Cumbria Acute Learning Disability Diamond Standards**

## **PENNA Awards 2023**

**Judith Thompson North East & Cumbria Learning  
Disability Network Manager**

**Kirsty Greenwell, North East & Cumbria Learning  
Disability Network Facilitator**

# The North East & Cumbria Learning Disability Network



**Our vision:** The North East & Cumbria will be the best place in England to live if you have a learning disability



**Our mission:** To tackle health, social care and education inequalities faced by people with a learning disability



**Our values:** People with a learning disability and their families will be at the centre of our work.



# The Team



Judith Thompson  
Network Manager



Julie Ticker  
Project Manager



Emma Cheetham  
Project Manager



Kirsty Greenwell  
Network Facilitator



Amy Hocking  
LeDeR co-ordinator

# The North East & Cumbria Learning Disability Network



Established 2010.  
Part of NHS  
England Clinical  
Networks and  
Senate, working  
on behalf of North  
East North  
Cumbria  
Integrated Care  
Board



Multi stakeholder  
network working  
with leaders  
across health,  
social care & the  
community  
voluntary sector



Our work  
programme  
focuses on  
tackling health  
inequalities



Work  
collaboratively  
as a region.  
Local areas  
then adopt  
and adapt to  
suit local  
needs.

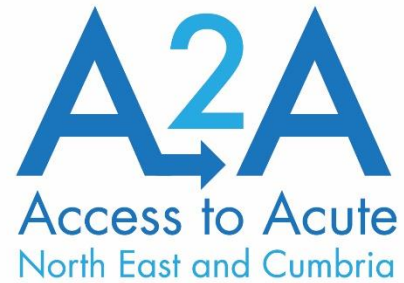


We are about  
innovation &  
creative  
thinking across  
the system to  
improve  
people's lives

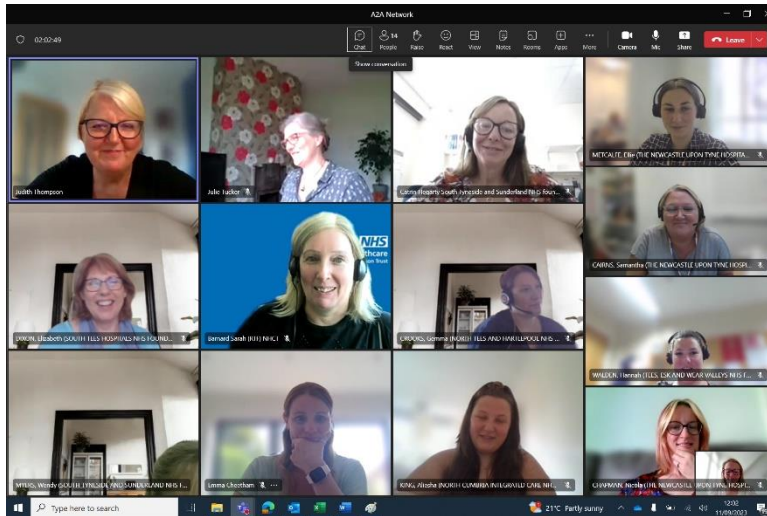




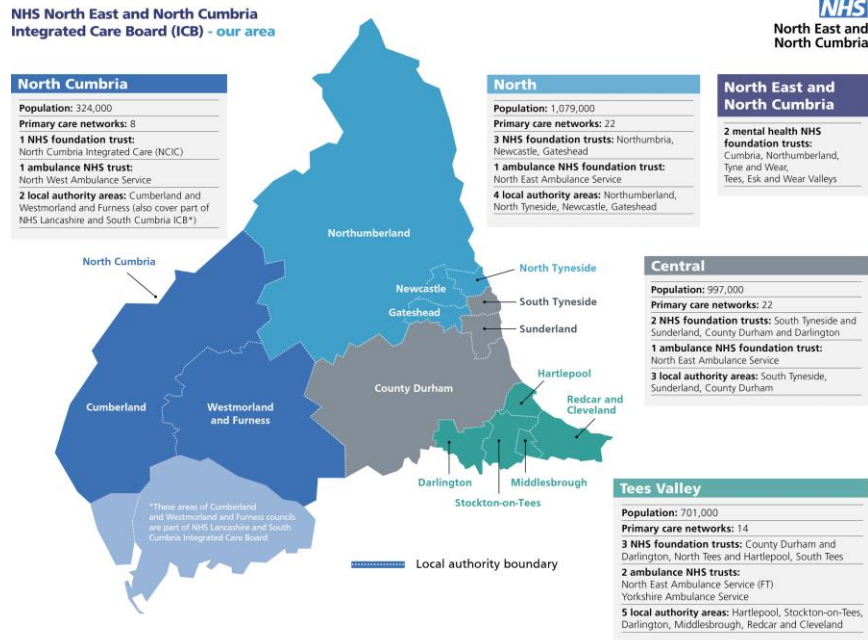
# Access to Acute (A2A) Network



- Set up by the North East & Cumbria Learning Disability Network as one of its first initiatives in 2010
- 8 Acute Trusts across the Integrated Care Board North East & North Cumbria geography
- Each of the Acute Trusts has an acute learning disability liaison function which is set up differently in each trust
- Shared commitment to work collaboratively, share best practice, eliminate variation and duplication, reduce avoidable deaths and tackle health inequalities for people with a learning disability.



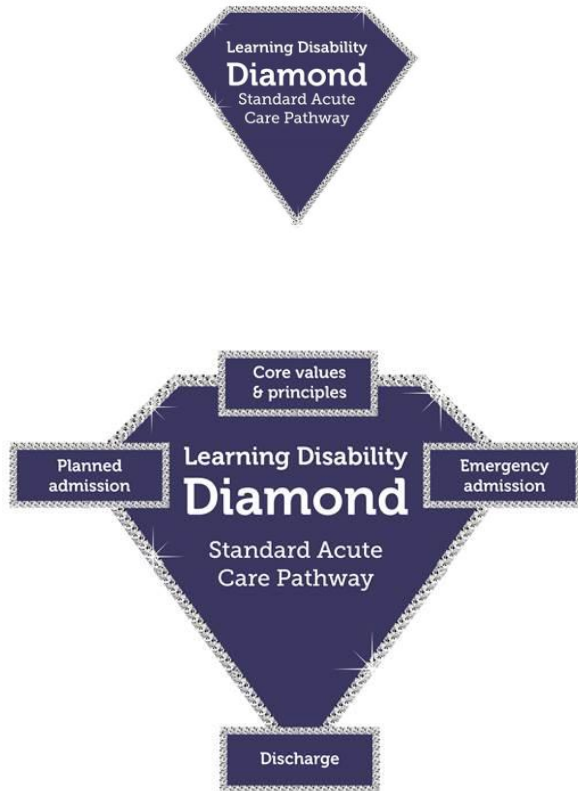
# Working Collaboratively



- In 2011 our first piece of collaborative work was developed
- We developed 8 learning disability acute care pathways in hospital settings which people with a learning disability would most frequently come in to contact with
- Every acute trust across the North East adopted and localised these pathways.
- As a North East & Cumbria Learning Disability Network & A2A Network we monitored the implementation, reviewed them regularly and made 2 revisions over the years.



# Building the Foundations



- 2019 – we agreed a full revision was needed. Building on the success of the 2011 care pathways but also recognising there’s be a lot of change across the NHS ‘Learning Disability Diamond Acute Standards’ were born!
- Building on the strong foundation, we spoke to people with a learning disability, families and the acute care workforce
- The 8 pathways were simplified into a:
  - Core set of values & principles which underpin them
  - Planned admission pathway
  - Emergency admission pathway
  - Discharge pathway
- Alongside the pathways we also developed the workforce education package and resources to support implementation.



# Real Life Case Study – Animation





# The Response



- All acute trusts have mandated the workforce education package. This can be delivered by the acute liaison nurse face to face or as an e-learning package
- Over 3000 responses to the feedback survey with overwhelmingly supportive comments about how the training will change peoples' practice.
- Lots of interest from other acute trusts and nationally to implement the Learning Disability Diamond Acute Standards



# Continuing to Build those Foundations 2020 - 2022

learning disability

A2A  
Access to Adults

## Health and Care Passport

Name:

learning disability  
Diamond  
Standard

NHS CARE

Contents Page 2

My Details	3
Communication	4
Home Environment	5
Living Support	6
Supporting pain or distress in Hospital	10
Sight and Hearing	13
Food and Drink	14
Keeping Safe	15

- Co-developed a regional Health & Care Passport to support people coming into hospital
- Co – developed the ‘What to do when you’re coming into hospital’ pack
- Development of the acute needs assessment tool

Pre Admission Page 3

You may need to go into hospital for treatment or care.

The hospital will send you a letter which will tell you:

Which hospital you need to go to

Why you need to go to hospital

The time and date you need to go into hospital.

Getting Ready for Hospital Page 4

If you are attending hospital for an appointment or treatment for a day you are called an outpatient.

If you are staying in hospital overnight you are called an inpatient.

If you are going to be an inpatient. You will need to pack a bag. Please Pack:

- A night dress or pyjamas
- Dressing gown
- Slippers
- Soap & flannel
- Toothbrush & Toothpaste
- Shampoo & conditioner
- Razor
- Deodorant
- Hairbrush
- Mobile phone and charger
- Specialist cup / cutlery if you use them.

You will also need:

- Glasses
- False teeth (and the container)
- Hearing aid.



# 2023 Onwards

**ARE YOU PROVIDING REASONABLE ADJUSTMENTS IN YOUR ROLE?**

**DO YOU KNOW WHAT THEY ARE?**

Health and care staff and services have a legal duty to provide reasonable adjustments under the Equality Act 2010.

Find out more about why Reasonable Adjustments are beneficial to you and the people you care for and resources to support you by scanning the QR code or visiting [www.necldnetwork.co.uk/work-programmes/reasonableadjustments](http://www.necldnetwork.co.uk/work-programmes/reasonableadjustments)

REASONABLE ADJUSTMENTS

SCAN ME →

**What are REASONABLE ADJUSTMENTS?**

You can find more information and resources at [www.necldnetwork.co.uk/work-programmes/reasonableadjustments](http://www.necldnetwork.co.uk/work-programmes/reasonableadjustments)

**ARE YOU SUPPORTING THE PEOPLE YOU CARE FOR BY ASKING FOR REASONABLE ADJUSTMENTS?**

**DO YOU KNOW WHAT THEY ARE?**

Health and care services and staff have a legal duty to provide reasonable adjustments to people with disabilities under the Equality Act 2010.

Find out more about why Reasonable Adjustments are beneficial to you and the people you care for by scanning the QR code or visiting [www.necldnetwork.co.uk/work-programmes/reasonableadjustments](http://www.necldnetwork.co.uk/work-programmes/reasonableadjustments)

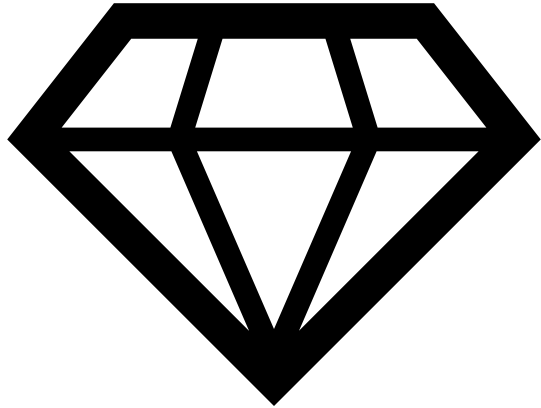
REASONABLE ADJUSTMENTS

SCAN ME →

- Further build the workforce education package to include Autism
- Pilot of 'Learning Disability Care Bags'
- NENC ICB fast follower project of the Reasonable Adjustment digital flag
- Development, launch & implementation of the Reasonable Adjustment Campaign for health professionals, social care professionals & people with a learning disability and families



# 2023 Onwards



The Learning Disability Diamond Standards are now recognised across our Integrated Care System. Building further upon ‘the diamond’ we have also developed:

- Learning Disability Maternity Diamond Standards (launching Oct 2023)
- Learning Disability Primary Care Diamond Standards (launched 2022)
- Learning Disability Dysphagia Diamond Standards (launching Dec 2023)
- Learning Disability Women’s Health Diamond Standards (launching 2024)





# Contact us



[www.neclnetwork.co.uk](http://www.neclnetwork.co.uk)



[England.learningdisabilitynetwork@nhs.net](mailto:England.learningdisabilitynetwork@nhs.net)



[@neclnetwork](https://twitter.com/neclnetwork)